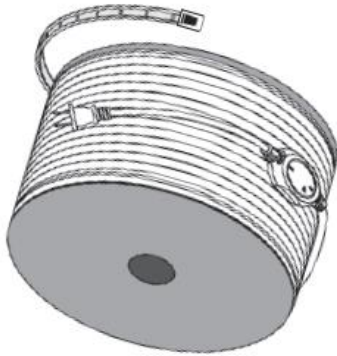




LED Value High-Voltage Flex



Application:

- Indoor Contour Lighting
- Cove Lighting
- Backlight



* Accessories PKG includes: 2 Clamps, 1 pin, 1 rectifier, 1 end cap.

Product description	Lumen/meter	Lifetime h (L70/B50)	Watt/meter	Color	Beam Angle	Voltage
LEDVALUE HVFLEX 6W/830 220V VS1 AP LEDV	260	10,000	6	3000K	120 Deg.	220-240V 50/60Hz
LEDVALUE HVFLEX 6W/840 220V VS1 AP LEDV	280	10,000	6	4000K		
LEDVALUE HVFLEX 6W/865 220V VS1 AP LEDV	280	10,000	6	6500K		
LEDVALUE HVFLEX ACCESSORY KITVS50INLEDV	Accessories bag					

Product Benefit

- Long lifetime LED light source, lifetime: up to 10,000 h (L70/B50)
- Energy saving with high lumen output LED chips.
- Warm/cool color temperatures available for customer's different ambiance requirements.
- Use Mercury-free and RoHS compliant materials.
- 6000 times switching cycle test, <0.5s starting time to ensure stable product performance.
- Best-in-class color consistency: SDCM 5, provide consistent and uniformed light output.
- High Color Rendering Index > 80, making sure light reflects true color of the objects.
- Type of protection: IP20
- Class II luminaire for indoor usage
- Maximum length: 50m



¹ Typical values. All the technical parameters apply to the entire luminaire. In view of the complex manufacturing process for light emitting diodes, the typical values given above for the technical LED parameters are merely statistical values that do not necessarily correspond to the actual technical parameters of an individual product; individual products may vary from the typical values.

² The average lifetime of LED Luminaire is defined as the number of hours when the light output of 50% of a large group of identical lamps goes below 70% of its initial luminous flux (L70B50, IEC62612). The lifetime is estimated at room temperature (25° C), free air burning, base up burning position and at rated voltage.



LED Value High-Voltage Flex

Product specifications

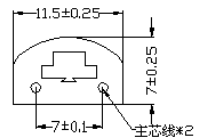
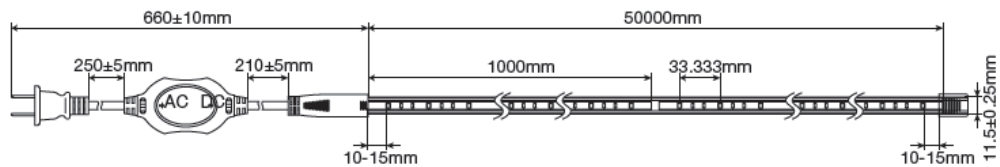
Common Characteristics						
Product Type	Average Lifetime	Switching Cycles	Casing Material	Starting Time	Warm up time (For 60% light)	Storage Temperature
LED Value HV Flex	10,000 hrs	60,000	PVC	<0.5s	<0.5s	-20 ~ + 65 ° C
Accessories	-	-	-	-	-	-
Product Type	Tc Temperature	CRI	Mercury Max.	Lamp Current	PF	Ta (Ambient temperature range)
LED Value HO Flex	65° C	> 80	0.0 mg	27 mA	>0.9	- 20 ~ + 40 ° C
Accessories	-	-	-	-	-	-

Ordering Guide

Product description	IC	EAN10	EAN40	Shipping Unit
LEDVALUE HVFLEX 6W/830 220V VS1 AP LEDV	AB497440055		4058075803343	1
LEDVALUE HVFLEX 6W/840 220V VS1 AP LEDV	AB497450055		4058075803350	1
LEDVALUE HVFLEX 6W/865 220V VS1 AP LEDV	AB497460055		4058075803367	1
LEDVALUE HVFLEX ACCESSORY KITVS50INLEDV	AB497480055	4058075803398	4058075803404	50

LED Value High-Voltage Flex

Mechanical & Electrical Specifications

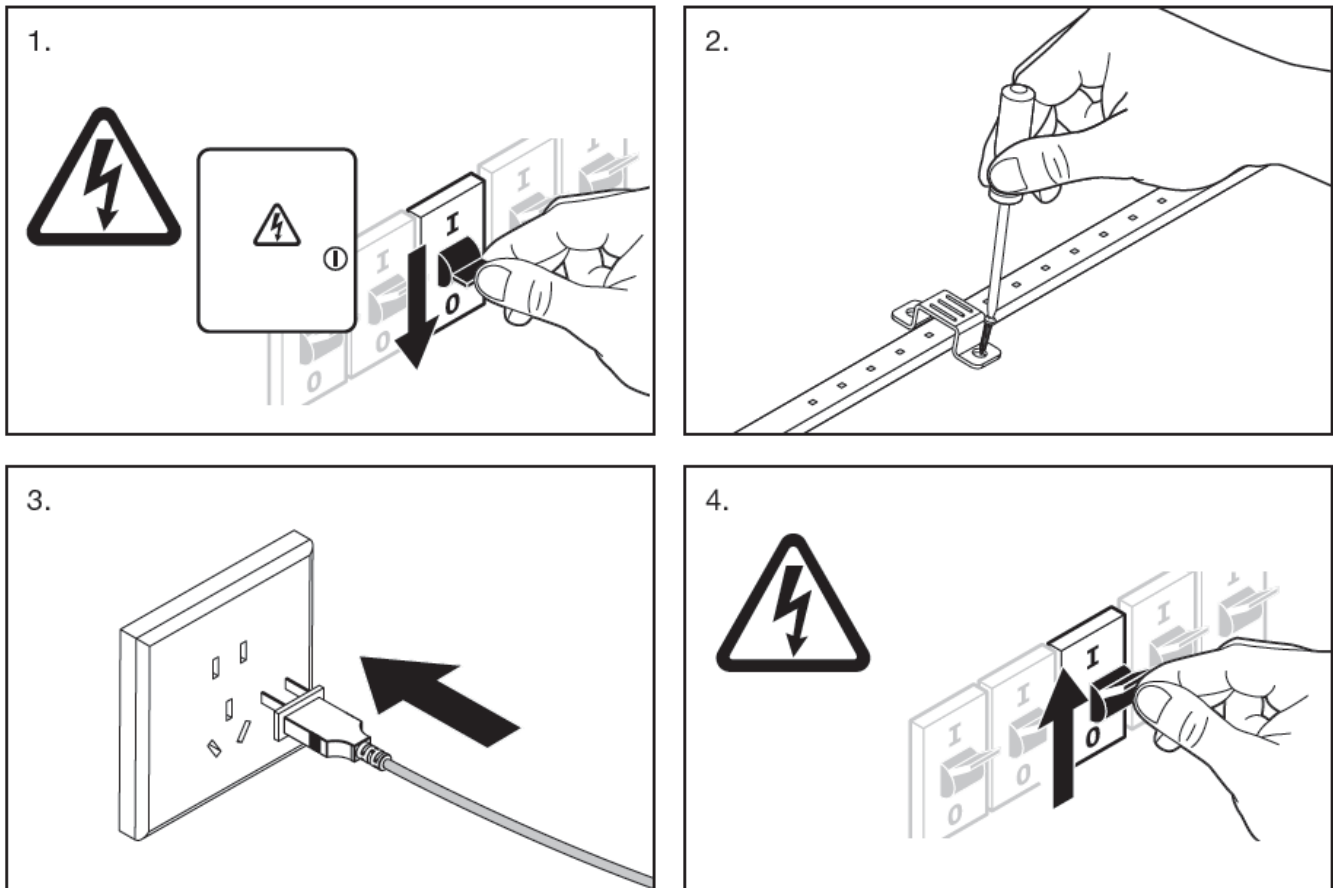


Lamp Conformity

- GB 7000.9-2008: LUMINAIRE 2-20 requirement
- IEC/EN 60598-1 Luminaires - Part 1:General requirements and tests for luminaire
- IEC/EN 60598-2-20: Particular requirements – Lighting chains
- EN 6247 Photo biological safety of lamps

LED Value High-Voltage Flex

Installation Guideline



Installation Guideline:

1. Disconnect mains power before assembly.
2. Please use plastic clamps to fix the flex.
3. Connect to the power supply.
4. Turn the power switch back on to verify that the flex is working properly.

Warnings:

1. This Product must be installed by licensed electricians.
2. This product can only be used with the connected rectifier provided by LEDVANCE.
3. The maximum length of this product is 50 meters. The maximum bending angle is 70 deg. (Horizontal Level). Pls. don't bend the product up to 90 Deg.
4. Pls. don't turn on the power before the flex has been spread flatly.
5. Pls. don't use the product anymore if you find that the insulated PVC cover of the product or the cable with rectifier has broken.
6. Pls. don't use the product in the environment with more than 40°C for long time.
7. Pls. only use this product for indoor application and pls. don't use this product in washing room.
8. Pls. don't install the product on any combustible items' surface
9. Pls. don't turn on the power when the product is covered by combustible material.
10. Pls. ensure that the product has been covered completely by insulated material to avoid any risk of electronic shock.
11. Pls. don't use any aromatic hydrocarbons or Chlorinated hydrocarbon solvent to do the cleaning for the product.



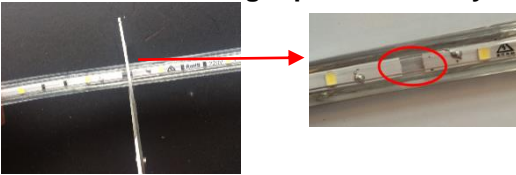
Luminaires not suitable for covering with thermally insulating material.

LED Value High-Voltage Flex

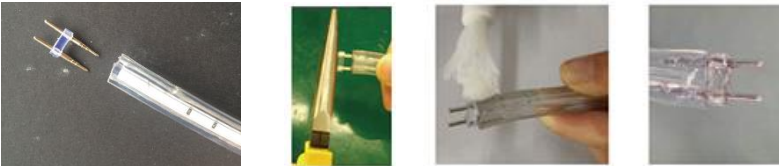
Flex Tailor Guideline

- 1 roll = 50 meters, with rectifier and end cap pre-installed in the roll.
- Customers can tailor the flex but the length should always be an integral number, i.e. 1m, 3m, 5m, 15m.
- Minimum cutting length ≥ 1 meter.
- Every tailored flex should add 1 accessories bag.

➤ Cut the flex in the right position: always cut the flex in the blank area between meters.



➤ Plug-in the pin with tool and add adhesive to fix the pin.



➤ Connect flex to the rectifier and add adhesive to fix the flex/fill in the gap: make sure positive and negative terminals('+' '-')are correctly connect.



➤ Cover flex end with end cap and add adhesive to fix end cap.



Installation Guideline:

1. Disconnect mains power before assembly.
2. Please use plastic clamps to fix the flex.
3. Connect to the power supply.
4. Turn the power switch back on to verify that the flex is working properly.

Warnings:

1. This Product must be installed by licensed electricians.
2. This product can only be used with the connected rectifier provided by LEDVANCE.
3. The maximum length of this product is 50 meters. The maximum bending angle is 70 deg. (Horizontal Level). Pls. don't bend the product up to 90 Deg.
4. Pls. don't turn on the power before the flex has been spread flatly.
5. Pls. don't use the product anymore if you find that the insulated PVC cover of the product or the cable with rectifier has broken.
6. Pls. don't use the product in the environment with more than 40°C for long time.
7. Pls. only use this product for indoor application and pls. don't use this product in washing room.
8. Pls. don't install the product on any combustible items' surface
9. Pls. don't turn on the power when the product is covered by combustible material.
10. Pls. ensure that the product has been covered completely by insulated material to avoid any risk of electronic shock.
11. Pls. don't use any aromatic hydrocarbons or Chlorinated hydrocarbon solvent to do the cleaning for the product.



Luminaires not suitable for covering with thermally insulating material.